

Kasthall WALL-TO-WALL
CARPETS *and* RUNNERS



KASTHALL

CONTENTS

MORE THAN A CENTURY OF EXPERIENCE	3
WALL-TO-WALL CARPETS <i>for</i> ALL SETTINGS	5
EXPRESSIVE RUNNERS	7
HOTELS AND RESTAURANTS <i>by</i> Kasthall	9
LISTED AND HISTORIC BUILDINGS <i>by</i> Kasthall	11
OFFICES AND PUBLIC SPACES <i>by</i> Kasthall	13
RETAIL CONCEPTS <i>by</i> Kasthall	15
CREATE A UNIQUE CUSTOMIZED CARPET <i>Tufted, woven and printed wall-to-wall carpets</i>	17
Kasthall WALL-TO-WALL COLLECTIONS A-Z	31
CARE ADVICE <i>and</i> GOOD TO KNOW	66

Kasthall
heaven[♥]



MORE *than a century* OF WALL-TO-WALL EXPERIENCE

Kasthall's COLLECTION OF WALL-TO-WALL CARPETS IS UNIQUE. BASED ON THE FINEST RAW MATERIAL COMBINED WITH OUR KNOWLEDGE IN TECHNIQUE AND QUALITIES, WE COMBINE THE BEST CARPETS FOR COMMERCIAL USE WITH EXCLUSIVE BESPOKE WOOL CARPETS. EACH AND EVERY CARPET IS WOVEN FOR A UNIQUE CLIENT, TO THEIR EXACT REQUIREMENTS OF COLOUR, PATTERN AND SIZE.

Our carpets for commercial use are hard-wearing, easy to install and maintain, and certified with regards to wear, safety and environmental regulations. Our exclusive bespoke wool carpets are based on our collections of area rugs and make perfect unique and exclusive wall-to-wall carpets, both for homes and public settings such as restaurants and hotels and Kasthall has been doing this since 1889.



STARTING *with* YOUR IDEA

WITH THE FULL WIDTH OF THE Kasthall RANGE, THE TEXTILE FLOOR COVERING OPTIONS ARE ENDLESS; FROM THE LUSH HANDTUFTED RUGS TO THE UNIQUELY WOVEN ALL THE WAY TO THE TECHNICAL YARNS OF THE FLAT WEAVE CARPETS, ALL WITH THE OPTION TO CUSTOMIZE.

Kasthall's specialty is the ability to develop floor covering concepts that include all qualities. For example creating a giant patchwork with different tufting structures, intarsia-like installations of flat weave or a graffiti artist work with a pattern repeat of 4x4 meter. In our extensive range you find carpets and runners for all kinds of settings, with a distinctive texture, an individual look and their own expression.

1. Vinge Law Firm; custom designed, hand tufted rugs as wall-to-wall carpet.*
2. Kosta Boda Art Hotel; custom designed, printed wall-to-wall carpet.
3. Operakällaren; custom designed, wilton woven wall-to-wall carpet.
4. Stadshuskällaren; custom colour of woven rug Häggå as wall-to-wall-carpet.*
5. Taverna Brillo; custom designed, tufted wall-to-wall-carpet.
6. Vinge Law Firm; patchwork installation of wall-to-wall carpet Beta.

**Read more about our woven and hand tufted rugs and Kasthall Atelier in our main catalogue or at www.kasthall.com.*



RUNNERS – JUST *follow* THAT RUG

THE RUNNER IS NOT ONLY THE NATURAL WAY OF REDUCING THE CLICKING SOUNDS OF HEELS ON STONE OR HARD WOOD FLOOR. IT SOFTENS THE STRUCTURAL IMPACT OF A SET OF STAIRS, INTEGRATES THE PLANNED COLOUR PALETTE AND REDUCES THE SLIPPING HAZARD.

The shape of the runner also directs and gives guidance through a corridor, hallway or across an open space area. It is also the perfect way to add colour and ambiance to a monochrome surface. Runners can be created using all our different qualities depending on the desired effect.

1. Svensk Exportkredit Office; custom design of woven rug Häggå.*
2. Stadshuskällaren; custom colour of woven rug Ingrid, installed in staircase.*
3. The Nobel Library of the Swedish Academy; custom design wilton woven runner.
*Read more about our woven rugs and Kasthall Atelier in our main catalogue or at www.kasthall.com.



HOTELS *and* RESTAURANTS

Kasthall's RUGS AND WALL-TO-WALL CARPETS ADORN MANY HOTELS AROUND THE WORLD. WE HAVE EXTENSIVE EXPERIENCE WORKING WITH THE DIVERSE AREAS THAT A HOTEL CONSISTS OF AND THEIR RESPECTIVE NEEDS; FROM LOBBIES AND RESTAURANTS TO CORRIDORS, GUEST ROOMS AND SUITES.

Over the years Kasthall has been working with 5-star hotels, design or boutique hotels and exclusive hotel chains all over the World. Chances are that you already have seen several examples of beautiful settings where Kasthall rugs are part of the ambiance.

1. The London NYC, custom colour of woven rug Häggå as wall-to-wall-carpet.*
2. Operakällaren; custom designed, wilton woven wall-to-wall carpet Pinstripe.
3. Browns Hotel, HIX at the Albemarle, woven rug Häggå as wall-to-wall carpet.*
4. Nobis Hotel, custom designed, printed wall-to-wall carpet.
5. The London NYC; woven rug Glenn as wall-to-wall carpet.*
6. Operabaren; custom designed, tufted wall-to-wall carpet.

**Read more about our woven rugs and Kasthall Atelier in our main catalogue or at www.kasthall.com.*



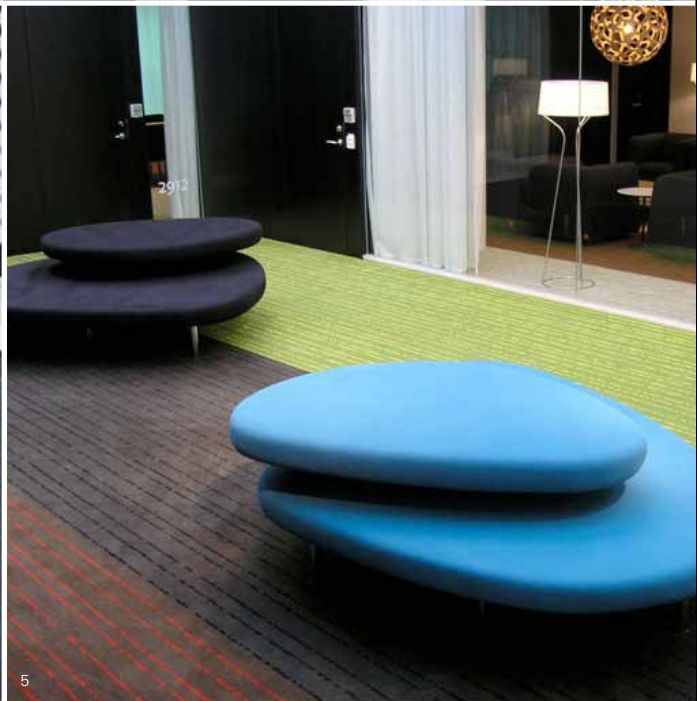
LISTED *and* HISTORICAL BUILDINGS

IN SENSITIVE HISTORIC ENVIRONMENTS, SUCH AS CASTLES, CHURCHES OR LISTED BUILDINGS, ANY UPDATED INTERIORS MUST BLEND PERFECTLY WITH THE EXISTING ATMOSPHERE.

With more than a century of experience in making customized rugs, and our strength in creating perfectly matched colour blends, Kasthall offers unique competence to make rugs and carpets for these special settings. The woven Häggå construction is perfect for this job; read more about our woven rugs in our main catalogue.

1. Church of Bankeryd, custom colour of woven rug Häggå seamed together.*
2. Stockholm City Hall; custom designed, wilton woven wall-to-wall carpet.
3. The Ibsen Museum, custom designed, tufted wall-to-wall carpet.

**Read more about our woven rugs and Kasthall Atelier in our main catalogue or at www.kasthall.com.*



OFFICES *and* PUBLIC SPACES

OFFICES AND PUBLIC SPACES ARE AREAS OF MANY DEMANDS – ACOUSTICS, CLEANING, FIRE AND WEAR TO NAME A FEW. YET THEY SHOULD ALSO FEEL INSPIRATIONAL AND CONVEY A SENSE OF IDENTITY TO THOSE WHO WORK IN OR VISIT THEM. Kasthall HELPS YOU CREATE A COMPLETE SOLUTION FOR THE FLOORS, FROM RECEPTIONS, OFFICE LANDSCAPES, MEETING AREAS TO EXECUTIVE OFFICES AND BOARD ROOMS.

1. Vinge Law Firm; patchwork of wall-to-wall carpet Beta and Peggy.
2. Vann Spa & Hotel; patchwork of wall-to-wall carpet Macro Melange.
3. University of Uppsala; custom designed, wilton woven wall-to-wall carpet.
4. Excelspecialisten Office; wall-to-wall carpet Andrew.
5. OMX Nasdaq HQ; patchwork of custom designed, wilton woven wall-to-wall carpet Pinstripe.



RETAIL CONCEPTS

THE INTERIOR DESIGN OF STORES AND BOUTIQUES IS THE ULTIMATE PHYSICAL MANIFESTATION OF A BRAND – WHERE THE CONSUMER CAN FULLY EXPERIENCE THE COMPANY PHILOSOPHY. CREATING SUCH DESIGN CONCEPTS REQUIRES BOTH VISION AND ATTENTION TO DETAIL. Kasthall HAS VAST EXPERIENCE IN HELPING LIFESTYLE COMPANIES EXPRESS THEIR UNIQUE IDENTITY USING OUR RUGS AND CARPETS.

1. Miss Sixty Brand Store, hand tufted rug Stubb on floors, walls and ceiling.*
2. Miss Sixty Brand Store, hand tufted rug Moss on floors, walls and ceiling.*
3. Herren Globus, custom designed, hand tufted rug as wall-to-wall carpet.*

**Read more about our hand tufted rugs and Kasthall Atelier in our main catalogue or at www.kasthall.com.*



DESIGN SOMETHING NEW *or mimic* SOMETHING OLD

YOUR DESIGN IDEA COULD COME FROM A FABRIC SAMPLE, AN OLD PIECE OF WALLPAPER OR AN INSPIRATIONAL PHOTO. WITH MINIMUM QUANTITIES FROM AS LITTLE AS 50 SQUARE METERS, YOU CAN ALWAYS ADD A UNIQUE TWIST TO YOUR PROJECT WITH OUR WOVEN AND TUFTED WOOL CARPETS.

You can choose a custom colour or a unique pattern, or both. Roll widths from 100 up to 400 cm offers flexibility for installment. We match any colour – choose between solid colours or sophisticated mélange colour blends. All carpets are tested and approved for commercial use. Let us help you create a new unique expression or match an existing interior!



TUFTED WALL-TO-WALL CARPETS



Taverna Brillo, Stockholm

TUFTED WALL-TO-WALL CARPETS

Material: Tufted wall-to-wall carpet in 100% wool

Pile height: approx. 8 or 11 mm

Minimum order: 50 m²

Size: The carpet is tufted approx. 400 cm wide. Roll length approx. 30 m.

Colours: Custom colours – contact your Kasthall representative for further information.

Tufted carpets – unique features:

- Sumptuous thick pile in 100% wool
- Up to six different solid colours in each design
- Well suited for large scale, organic patterns
- Offer the possibility to add a border to the design. Option to choose between cut pile, boucle (loop) pile or a combination.
- Approved for continuous use of castor wheels and for stairs
- Excellent for offices and hotel corridors

Examples of technical specifications of qualities included in this section. Contact Kasthall for exact specification/quality.



Wear classification:
(EN 1307) Class 32
Commercial General



Wear classification:
(EN 1307) Class 23
Domestic heavy



Suitable for
Castor chair: (EN 985)
Continuous use



Slip resistance:
DS



Stair suitability:
Continuous use



Luxury class:
LC5 Prestige



Burning classification:
(EN 13501-1) Bfl-S1



Flammability: (ASTM D 2859-06) Meets the requirements,
(ASTM E 648-06a) 0,91 W/cm²

TUFTED WALL-TO-WALL CARPETS Case information Taverna Brillo



When the owners of Sturehof, Riche and Teatergrillen decided to open their fourth and largest restaurant, inspired by an Italian marketplace, they decided to work with the Swedish interior designer Jonas Bohlin.

To get the urban and contemporary twist, Jonas Bohlin hired the Swedish graffiti artist called Nug aka Magnus Gustafsson. He has been called one of the worst graffiti vandals in Sweden but his works have also been shown at different galleries, like the art fair Market. Nug studied at the art college Konstfack where he earned a Master of Arts degree in 2008. The final result – Taverna Brillo, a melting pot that stimulates every part of your senses.



The original wall-to-wall carpet in Operakällaren was designed by Yngve Gamlin in the mid 1950's. Yngve Gamlin was a Swedish director, actor, artist and all around creative wiz with in Swedish theater and film during the 50's and 60's. He was also one of Sweden's foremost scenografers and many of his settings for Dramaten and the Swedish Royal Opera are still legendary. When Operabaren was restored almost 60 years later after the first rug was installed, they came back to Kasthall with only one request; the same Kasthall quality once more.



WOVEN WALL-TO-WALL CARPETS



Operakällaren, Stockholm

WOVEN WILTON WALL-TO-WALL CARPETS

Material: Woven wall-to-wall carpet in 80% wool and 20% polyamide (antistatic) or 100% wool.

Pile height: cut pile approx. 6,5 mm and bouclé pile approx. 5 or 6,5 mm.

Minimum order: 50 rm

Size: The carpet is woven approx. 100, 200, 300 or 400 cm wide.

Colours: Custom colours – contact your Kasthall representative for further information.

Woven carpets – unique features:

- Durable wilton construction in 80% wool and 20% polyamide or 100% wool
- Possible to create perfectly matched mélange colour blends
- Well suited for small scale geometric patterns
- Option to choose between cut pile, bouclé (loop) pile, or a combination
- Approved for use of castor wheels
- Excellent for hotels, restaurants and executive offices

Examples of technical specifications of qualities included in this section. Contact Kasthall for exact specification/quality.



Wear classification:
(EN 1307) Class 32
Commercial General



Wear classification:
(EN 1307) Class 23
Domestic heavy



Suitable for
Castor chair: (EN 985)
Occasional use



Slip resistance:
DS



Luxury class:
LC 4 Luxurious



Burning classification:
(EN 13501-1) Bfl-S1



Flammability: (ASTM D 2859-06) Meets the requirements,
(ASTM E 648-06a) 1,02 W/cm²

Sound insulation: (ISO 11654) Class D

WOVEN WILTON WALL-TO-WALL CARPETS Case information Operakällaren



When Claesson Koivisto Rune landed the prestigious project to redesign Stockholm's famous restaurant Operakällaren, at the Royal Opera House, they asked Kasthall to provide the carpet. The previous carpet, designed in 1962, had also been produced by Kasthall.

"We wanted to give this formal restaurant a more relaxed atmosphere and the carpet became our foremost tool. Inspiration came from a picture of the actor Kevin Spacey dressed in a pin-stripe suit with an unbuttoned shirt. 'Just like that!', we thought. The pin-stripe pattern was hand-drawn with a pencil and then enlarged. It's only noticeable if you know about it" says Ola Rune, architect and partner.



The interior decoration of Bella Sky Comwell is based on an innovation of the classic hotel. With its 23 floors, 812 designer rooms and 28 flexible meeting and conference rooms, the hotel is the largest in Scandinavia, reflecting Copenhagen's pulsating energy while providing space for intimacy.

Bella Sky follows the tradition of renowned Scandinavian design and is decorated with simple components in stylish materials that reflect the hotel's exclusivity.

Kasthall provided rugs and wall-to-wall carpets to the entire hotel from the custom made boucle rugs in the restaurant to the woven wall-to-wall in the conference area. This wall-to-wall design combines bouclé and cut surface in a simple linear pattern.



PRINTED WALL-TO-WALL CARPETS



Nobis Hotel, Stockholm

PRINTED WALL-TO-WALL CARPETS

Material: Tufted wall-to-wall carpet in 80% wool and 20% polyamid (antistatic) or 100% polyamid (antistatic).

Pile height: approx. 5, 5,5, 6 or 8 mm.

Minimum order: 200 m²

Size: The carpet is tufted approx. 400 cm wide.

Colours: Custom colours – contact your Kasthall representative for further information.

Printed carpets – unique features:

- Total pattern freedom
- Available in wool or polyamide
- Excellent for hotels and restaurants
- Minimum order 200 m²

Examples of technical specifications of qualities included in this section. Contact Kasthall for exact specification/quality.



Wear classification:
(EN 1307) Class 33
Commercial heavy



Suitable for
Castor chair: (EN 985)
Continuous use



Body voltage:
< 1,5 kV



Slip resistance:
DS



Stair suitability:
Continuous use



Luxury class:
LC 4 Luxurious



Burning classification:
(EN 13501-1) Cfl-S1

Sound insulation: (ISO 140-8) ca 29 dB, Light fastness ISO 105-B02 ≥ 5
Water fastness DIN EN ISO 105 E01 ≥ 4, Resistance to abrasion DIN EN ISO 105X12 ≥ 3

PRINTED WALL-TO-WALL CARPETS Case information Nobis Hotel



The Nobis Hotel is a 5-star hotel in the center of Stockholm, designed with a holistic attitude, together with a certain amount of eccentricity by the internationally acclaimed architect trio Claesson, Koivisto and Rune.

“The colour scheme and lighting design is warm and subdued throughout. We call it Scandinavian dark blond. Another recurring theme is subtle patterns, in many cases derived from our own abstracted architectural drawings, like the corridor carpeting and the wallpaper in the conference section”.



The entire Kosta Boda Art Hotel is decorated with art glass, in installations as well as in exhibitions. Kosta Boda's renowned designers have contributed to the design of the different parts of the hotel, corridors and hotel rooms. The design of the wall-to-wall carpet is a collage of design sketches of some of the iconic art pieces designed by Bertil Vallien, Kjell Engman, Ulrica Hydman-Vallien, Göran Wärff, Anna Ehrner among others.



Kasthall WALL-TO-WALL
COLLECTIONS A-Z

*the best is
yet to come!*




ALFA & BETA™



THESE WOVEN BOUCLÉ-TYPE WALL-TO-WALL CARPETS HAVE *elegant ribbed patterns* AND A HARD-WEARING TEXTURE THAT IS IDEAL FOR AREAS SUBJECT TO HEAVY WEAR. ALFA HAS A SMALLER AND DENSER PATTERN THAN BETA. BOTH ARE AVAILABLE IN THE SAME 21 COLOURS AND ARE MADE FROM POLYAMIDE. CARPETS CAN ALSO BE ORDERED WITH STITCHED EDGES, IN THE SIZE OR SHAPE YOU REQUIRE.

ALFA & BETA™ WOVEN WALL-TO-WALL carpet
IN 100% POLYAMIDE (antistatic)

Product type: Woven wall-to-wall carpet in 100% polyamide (antistatic)

Pile material: 100% polyamide (antistatic)

Binding warp: Polyester 53 g/m²

Weft material: Polypropylene 135 g/m², Polyester 135 g/m²

Adhesive: Synthetic latex

Pile height: approx. 3 mm

Pile weight: approx. 780 g/m²

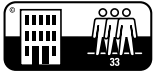
Total height: approx. 4 mm

Total weight: approx. 2400 g/m²

Roll width: approx. 400 cm

Roll length: approx. 30 m

Special colour minimum order: 200 m²



Wear classification:
(EN 1307) Class 33
Commercial heavy



Suitable for
Castor chair: (EN 985)
Continuous use



Body voltage:
< 1,5 kV



Thermal resistance:
0.10/0.07 m² C/W.
Suitable for underfloor heating



Slip resistance:
DS



Stair suitability:
Continuous use



Burning classification:
(EN 13501-1) Cfl-S1



Flammability: (ASTM D 2859-01/DOC FF 1-70) Meets the requirements
(ASTM E 648-03/NPFA 253-00) CRF 0,78 W/cm²

Surface resistance: approx. $\leq 10^{10}$ Ohm
Sound insulation: approx. 18 dB

LEED: Alfa & Beta have LEED certification
- CRI Green label Plus

ALFA & BETA Inspiration – Patchwork installation of Beta

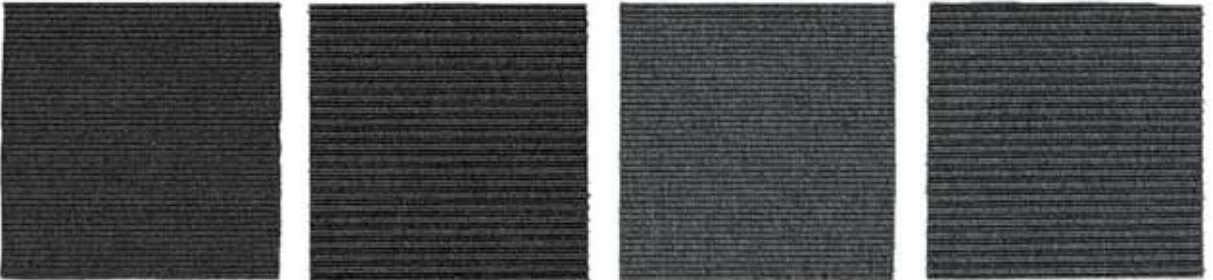


ALFA & BETA Colours – Samples 15x15 cm

Alfa
Ice Grey 660142
Beta
Ice Grey 670142

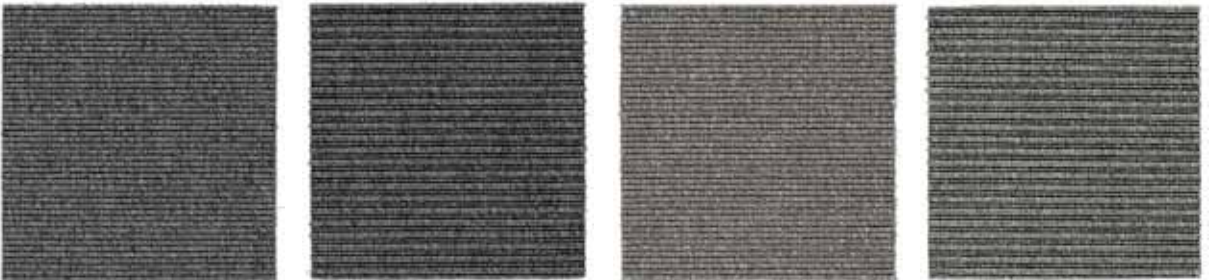


Alfa
Indigo 660007
Beta
Indigo 670007



Alfa
Black 660001
Beta
Black 670001

Alfa
Slate Grey 660017
Beta
Slate Grey 670017



Alfa
Dark Grey 660091
Beta
Dark Grey 670091

Alfa
Grey 660094
Beta
Grey 670094

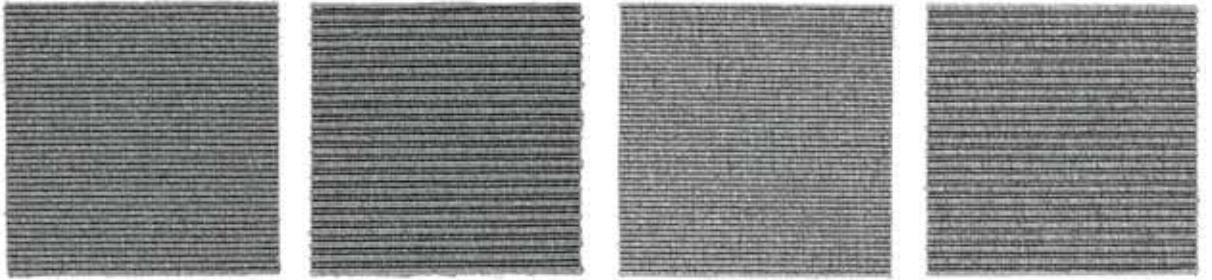


Alfa:
Tin Grey 660012
Beta:
Tin Grey 670012

Alfa:
Thunder Green
660138
Beta:
Thunder Green
670138

ALFA & BETA Colours – Samples 15x15 cm

Alfa
Light Marble 660115
Beta
Light Marble 670115



Alfa
Light Grey 660004
Beta
Light Grey 670004



Alfa
Silver 660011
Beta
Silver 670011

Alfa
Green Grey 660056
Beta
Green Grey 670056

Alfa
Beige 660092
Beta
Beige 670092



Alfa
Beige Grey 660054
Beta
Beige Grey 670054

Alfa:
Brass 660155
Beta:
Brass 670155



Alfa:
Golden 660005
Beta:
Golden 670005

ALFA & BETA Colours – Samples 15x15 cm

Alfa
Beige Brown 660057
Beta
Beige Brown 670057



Alfa
Bark Brown 660158
Beta
Bark Brown 670158

Alfa
Aubergine 660126
Beta
Aubergine 670126



Alfa
Black Brown 660018
Beta
Black Brown 670018

Alfa
Red 660027
Beta
Red 670027





ANDREWTM
.....
Design PETRA LUNDBLAD
.....



Preera Office, Sweden

ANDREW IS A *woven* WALL-TO-WALL CARPET WITH A SMOOTH TEXTURE AND BEAUTIFUL COLOUR BLENDS, CREATING A *sophisticated* LOOK THAT COMPLEMENTS MANY INTERIOR STYLES. THE FINISH OF THE CARPET IS SIMILAR TO WOOL, BUT IT IS ACTUALLY WOVEN IN POLYAMIDE, WHICH MAKES IT VERY HARD WEARING AND SUITABLE FOR PUBLIC PLACES THAT SEE HEAVY USE. THE COLOUR SCALE IS IN *muted graphical tones*.

Product type: Woven wall-to-wall carpet in 100% polyamide

Pile material: 100% polyamide (antistatic)

Primary backing: PES / PP

Secondary backing: Latex

Pile height: approx. 2,3 mm

Pile weight: approx. 645 g/m²

Total height: approx. 4,3 mm

Total weight: approx. 1445 g/m²

Roll width: approx. 200 cm

Roll length: approx. 25 m

Minimiqty special colour: 500 sqm



Wear classification:
(EN 1307) Class 33
Commercial heavy



Suitable for
Castor chair: (EN 985)
Continuous use



Body voltage:
< 1,5 kV



Slip resistance:
DS



Burning classification:
(EN 13501-1) Cfl-S1



Flammability: (ASTM D 2859-01/DOC FF 1-70) Meets the requirements
(ASTM E 648-03/NPFA 253-00) CRF 0,78 W/cm²

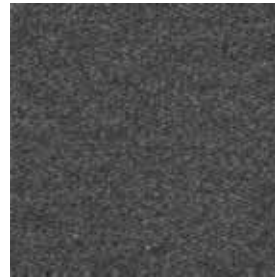
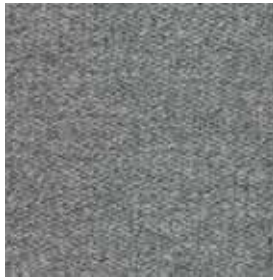
Surface resistance: approx. $\leq 10^{10}$ Ohm. Sound insulation: approx. 18 dB
LEED: Andrew has LEED certification – CRI Green label Plus

ANDREW Inspiration



.....
ANDREW Colours on stock
.....

Light Grey 092010-502
Granite 092010-504
Dark Grey 092010-902
Black 092010-901



.....
Tweed 092010-704
Sand 092010-801



.....
ANDREW Colours available for order (minimum 500m²):
.....

Marble 092010-904
Eggplant 092010-701
Rust 092010-071
Ochre 092010-027



.....
Sandalwood 092010-201





GOLF/GOLF TILES™



THIS WOVEN BOUCLÉ-TYPE CARPET HAS A *small and elegant* RIBBED PATTERN AND A HARD-WEARING TEXTURE THAT IS IDEAL FOR AREAS SUBJECT TO HEAVY WEAR. GOLF IS AVAILABE IN 14 COLOURS AND MADE FROM ANTISTATIC POLYAMIDE. THE CARPET CAN BE ORDERD IN FULL LENGTHS OR AS TILES (50x50 CM *or special size* 60x60 CM). THE CARPET CAN ALSO BE ORDERD WITH STITCHED EDGES IN THE SIZE AND SHAPE YOU REQUIRE. PLEASE NOTE THAT WE RECOMMEND *chessboard* INSTALLATION FOR GOLF TILES.

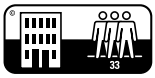
GOLF/GOLF TILES™ WOVEN WALL-TO-WALL carpet IN 100% POLYAMIDE (antistatic)

Golf:

Product type: Woven, wall-to-wall bouclé carpet
Pile material: 100 % polyamide (antistatic)
Binding warp: Polyester 70 g/m²
Weft material: Polypropylene 180 g/m²
Pile height: approx. 2 mm
Pile weight: approx. 650 g/m²
Adhesive: Synthetic latex
Total height: approx. 4 mm
Total weight: approx. 2000 g/m²
Roll width: approx. 400 cm
Roll length: approx. 30 m
Dimensional variation: +/- 3%

Golf Tiles:

Product type: Woven, wall-to-wall bouclé carpet
Pile material: 100% polyamide (antistatic)
Binding warp: Polyester 70 g/m²
Weft material: Polypropylene 180 g/m²
Pile height: approx. 2 mm
Pile weight: approx. 650 g/m²
Adhesive: Bitumen
Total height: approx. 4,7 mm
Total weight: approx. 4300 g/m²
Size: 50x50 cm (Special size: 60x60 cm)
Dimensional variation: +/- 0,2%



Wear classification:
(EN 1307) Class 33
Commercial heavy



Suitable for
Castor chair: (EN 985)
Continuous use



Body voltage:
< 1,5 kV

Doesn't apply for Golf tiles:



Stair suitability:
Continuous use



Thermal resistance:
0.10/0.07 m² C/W.
Suitable for underfloor heating



Slip resistance:
DS



Burning classification:
(EN 13501-1) Cf-S1



Surface resistance: approx. $\leq 10^{10}$ Ohm
Sound insulation: approx. 18 dB

LEED: Golf/Golf Tiles has LEED certification
– CRI Green label Plus

GOLF/GOLF TILES Inspiration



GOLF/GOLF TILES Colours on stock

Golf Natural Grey 6912
Golf Tiles Natural Grey
691205
Golf Cool Grey 6913
Golf Tiles Cool Grey
691305
Golf Dark Grey 6915
Golf Tiles Dark Grey
691505
Golf Natural Black 6917
Golf Tiles Natural Black
691705



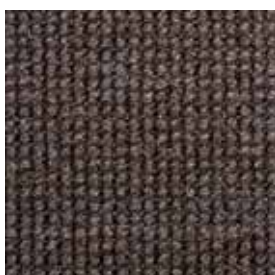
Golf Terracotta 6924
Golf Tiles Terracotta
692405
Golf Red 6927
Golf Tiles Red 692705
Golf Navy 6945
Golf Tiles Navy 694505
Golf Dark Marine 6948
Golf Tiles Dark Marine
694805



Golf Beige Grey 6951
Golf Tiles Beige Grey
695105
Golf Nougat 6952
Golf Tiles Nougat 695205
Golf Fudge 6953
Golf Tiles Fudge 695305
Golf Chocolate 6954
Golf Tiles Chocolate
695405



Golf Grey Brown 6956
Golf Tiles Grey Brown
695605
Golf Raisin 6957
Golf Tiles Raisin 695705







JACK IS A *jacquard woven* WALL-TO-WALL CARPET WITH A SMOOTH TEXTURE AND STREAMLINED LOOK, MAKING IT AN EASY-CARE FLOOR COVERING. THE CARPET IS MADE OF OUR MOST DURABLE POLYAMIDE FOR PUBLIC AREAS SUBJECT TO HEAVY WEAR. WITH A PATTERN INSPIRED BY THE FASHION WORN IN 1960's *gangster films* SUCH AS TIGHT CHECKED SUITS, IT GIVES THE FLOOR AN *elegant* AND TAILORED STYLE. JACK IS AVAILABLE IN *nine* COLOUR COMBINATIONS USING NATURE-INSPIRED AND SUBDUED SHADES.

Castle House Apartments, London

Product type: Woven wall-to-wall carpet in 100% polyamide (antistatic)

Pile material: 100% polyamide (antistatic)

Binding warp: Polyester 53 g/m²

Weft material: Polyamid 250 g/m², polypropylen 70 g/m²

Adhesive: Synthetic latex

Pile height: approx. 2 mm

Pile weight: approx. 780 g/m²

Total height: approx. 4 mm

Total weight: approx. 2400 g/m²

Pattern repeat: Height 19,4 cm, width 18,4 cm

Roll width: approx. 400 cm

Roll length: approx. 30 m

Special colour minimum order: 200 m²



Wear classification:
(EN 1307) Class 33
Commercial heavy



Suitable for
Castor chair: (EN 985)
Continuous use



Body voltage:
< 1,5 kV



Thermal resistance:
0.10/0.07 m² C/W.
Suitable for underfloor heating



Slip resistance:
DS



Stair suitability:
Continuous use



Burning classification:
(EN 13501-1) Cfl-S1



Surface resistance: approx. $\leq 10^{10}$ Ohm
Sound insulation: approx. 18 dB

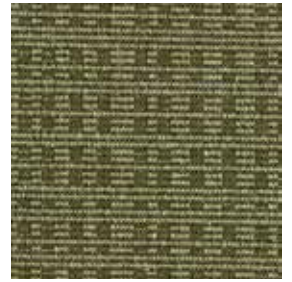
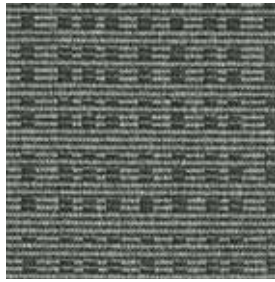
LEED: Jack has LEED certification
– CRI Green label Plus

JACK Inspiration

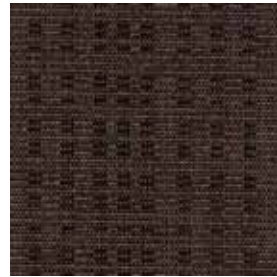


JACK Colours

Black 9301
Light Grey 9304
Light Green 9333
Green 9336



Beige-Grey 9354
Beige-Brown 9357
Brown 9358
Aubergine 9377



Grey 9394





MACRO MELANGE™
Design GUNILLA LAGERHEM ULLBERG/
PETRA LUNDBLAD



Cell Mark Office, Sweden

A WOVEN WALL-TO-WALL BOUCLÉ
CARPET WITH AN ELEGANT
ribbed pattern AND A HARD-WEARING
TEXTURE THAT IS IDEAL FOR
AREAS SUBJECT TO HEAVY WEAR.
IN 17 DIFFERENT COLOURS IT CAN
ALSO BE ORDERED WITH STITCHED
EDGES, IN THE SIZE AND SHAPE
YOU REQUIRE.

MACRO MELANGE™

WOVEN WALL-TO-WALL carpet
IN 80% WOOL and 20% POLYAMIDE (antistatic)

Product type: Woven wall-to-wall carpet in 80% wool and 20% polyamide (antistatic)

Pile material: 80% wool, 20% polyamide (antistatic)

Binding warp: Polyester 53 g/m²

Weft material: Polypropylene 135 g/m², Polyester 135 g/m²

Adhesive: Synthetic latex

Pile height: approx. 3 mm

Pile weight: approx. 800 g/m²

Total height: approx. 5 mm

Total weight: approx. 2650 g/m²

Roll width: approx. 400 cm

Roll length: approx. 30 m

Special colour minimum order: 200 m²



Wear classification:
(EN 1307) Class 33
Commercial heavy



Suitable for
Castor chair: (EN 985)
Continuous use



Body voltage:
< 1,5 kV



Slip resistance:
DS



Stair suitability:
Continuous use



Burning classification:
(EN 13501-1) CfI-S1

Sound insulation: approx. 18 dB

LEED: Macro Melange has LEED certification – CRI Green label Plus

MACRO MELANGE Inspiration – Patchwork installation



MACRO MELANGE Colours

Beige 9203
Beige-Yellow 9204
Brown 9207
Mocha 9206



Light Grey 9211
Middle Grey 9212
Dark Grey 9214
Black 9219



Heather 9225
Aubergine 9222
Rose Red 9227
Red 9223



Grass Green 9232
Beige-Green 9231
Grey-Green 9235
Turquoise 9242



Petrol 9244







MAJA IS A *luxurious* WALL-TO-WALL CARPET MADE IN 100% WOOL. WITH A PILE HEIGHT OF 1 CM, ITS SUMPTUOUS FEELING SUITS BOTH DOMESTIC SETTINGS AND LIGHTER COMMERCIAL AREAS SUCH AS HOTEL ROOMS. THE COLLECTION COMPRISES NO LESS THAN 22 COLOURS, WHICH MEANS THAT YOU'LL BE SURE TO FIND JUST THE RIGHT *nuance* FOR YOUR NEEDS. ITS UNI-COLOURED SURFACE MAKES IT *easy to install* AND FITS INTO ALMOST ANY DECORATING SCHEME. MAJA IS ALSO AVAILABLE AS AN AREA RUG WITH STITCHED EDGES.

Product type: Tufted wall-to-wall carpet in 100% wool

Pile material: 100% wool

Adhesive: Action back P.P

Backing: Syntetic latex

Pile height: approx. 10 mm

Pile weight: approx. 1850 g/m²

Total height: approx. 12 mm

Total weight: approx. 2900 g/m²

Roll width: approx. 400 cm

Roll length: approx. 25 m



Wear classification:
(EN 1307) Class 32
Commercial General



Wear classification:
(EN 1307) Class 23
Domestic heavy



Thermal resistance:
0.10/0.07 m² C/W.
Suitable for underfloor heating



Burning classification:
(EN 13501-1) Bfl-S1



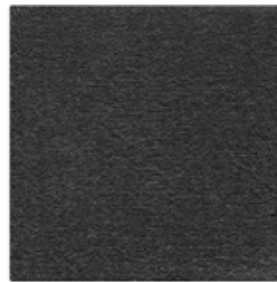
Luxury class:
LC 4 Luxurious

MAJA Colours

White 801
Eggshell 828
Silver 838
Sage 841



Silver Grey 839
Clay 840
Pencil Grey 824
Ocean Grey 842



MAJA Colours

Black 827
Navy 844
Blue 843
Purple 837



Ruby Red 815
Scarlet 814
Coral 835
Powder Beige 803



Sabayone 829
Sand 833
Nougat 831
Milk Chocolate 808



Dark Chocolate 809
Jade 834





PEGGY™
.....
Design ANNA SCHOU
.....



PEGGY IS A JACQUARD WOVEN WALL-TO-WALL CARPET WITH A SMOOTH TEXTURE AND *streamlined look*, MAKING IT AN EASY-CARE FLOOR COVERING. THE CARPET IS MADE OF OUR MOST DURABLE POLYAMIDE FOR PUBLIC AREAS SUBJECT TO HEAVY WEAR. THE PATTERN IS INSPIRED BY *graphic design* FROM THE 1970's, AND ITS ROUND SHAPES CREATE A SOFT FEELING REMINISCENT OF THE VIBRANT *A-line dresses* OF THAT TIME. PEGGY IS AVAILABLE IN A RANGE OF SIX DIFFERENT COLOURS.

Product type: Woven wall-to-wall carpet in 100% polyamide (antistatic)

Pile material: 100% polyamide (antistatic)

Binding warp: Polyester 53 g/m²

Weft material: Polyamid 250 g/m² , polypropylen 70 g/m²

Adhesive: Synthetic latex

Pile height: approx. 2 mm

Pile weight: approx. 780 g/m²

Total height: approx. 4 mm

Total weight: approx. 2400 g/m²

Pattern repeat: Height 10,6 cm, width 10,8 cm

Roll width: approx. 400 cm

Roll length: approx. 30 m

Special colour minimum order: 200 m²



Wear classification:
(EN 1307) Class 33
Commercial heavy



Suitable for
Castor chair: (EN 985)
Continuous use



Body voltage:
< 1,5 kV



Thermal resistance:
0.10/0.07 m² C/W.
Suitable for underfloor heating



Slip resistance:
DS



Stair suitability:
Continuous use



Burning classification:
(EN 13501-1) Cf-S1



Surface resistance: approx. $\leq 10^{10}$ Ohm
Sound insulation: approx. 18 dB

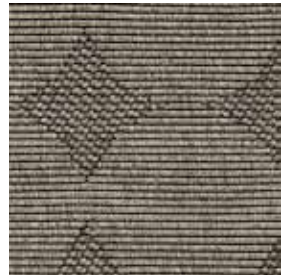
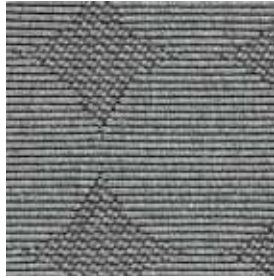
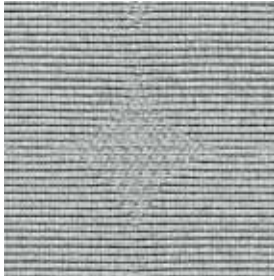
LEED: Peggy has LEED certification
– CRI Green label Plus

PEGGY Inspiration – Special colour in red

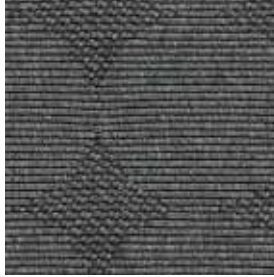


PEGGY Colours

Silver 9412
Light Grey 9414
Green-Black 9435
Beige-Grey 9454



Petrol 9486
Grey 9494





TOM™
.....
Design PETRA LUNDBLAD
.....



THE WALL-TO-WALL CARPET TOM *perfectly combines* SOPHISTICATED DESIGN WITH A SUSTAINABLE AMBITION, DEMONSTRATING THAT *green can also be elegant*. THE CARPET IS MADE FROM THE SPECIAL POLYAMID YARN ECONYL[®], WHICH IS MADE OF *recycled fishing nets*. THE FELT BACKING IS ALSO MADE OF RECYCLED POLYESTER, CREATING A *fully recycled product*. ALL THIS WITHOUT COMPROMISING EITHER THE FUNCTIONALITY OR DESIGN OF THE PRODUCT – TOM IS SUITABLE FOR APPLICATION IN HEAVILY TRAFFICKED COMMERCIAL AREAS, AND WITH ITS SUBTLE DESIGN WITHOUT A PATTERN REPEAT, IS EASY TO INSTALL.

Korsettfabriken Office, Sweden

Product type: Woven wall-to-wall carpet in 100% polyamide, recycled yarn – Econyl®

Pile material: 100% Econyl SD – recycled Polyamid

Primary backing: 100% recycled Polyester

Secondary backing: Felt backing – 100% recycled Polyester

Pile height: approx. 0,5 mm

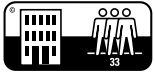
Pile weight: approx. 165 g/m²

Total height: approx. 2,6 mm

Total weight: approx. 1310 g/m²

Roll width: approx. 188 cm

Roll length: approx. 25 m



Wear classification:
(EN 1307) Class 33
Commercial heavy



Suitable for
Castor chair: (EN 985)
Continuous use



Body voltage:
< 1,5 kV



Slip resistance:
DS



Stair suitability:
Continuous use



Burning classification:
(EN 13501-1) CfI-S1



Flammability:
(ASTM D 2859-06) Meets the requirements

Surface resistance: approx. $\leq 10^{10}$ Ohm
Sound insulation: approx. 16 dB

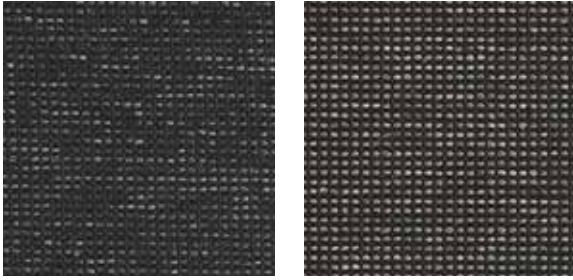
LEED: Tom has LEED certification
– CRI Green label Plus

TOM Inspiration



TOM Colours

Graphite 091040-05A
Ochre 091040-08C



TOM Winner of the Red Dot Award



reddot design award
winner 2012

We are proud to announce that our wall-to-wall carpet Tom, made from 100% recycled materials, is the winner of Red Dot design award 2012. The wall-to-wall carpet Tom perfectly combines sophisticated design with a sustainable ambition, demonstrating that green can also be elegant. The carpet is made from the special polyamid yarn Econyl®, which is made of recycled fishing nets, and is suitable for use in high traffic areas.

CARE ADVICE *and* GOOD TO KNOW

CLEANING ADVICE

We recommend that cleaning is carried out by a professional cleaning company. At www.kasthall.com you can read more about our materials, how to look after your carpet and find our stain guide.

CARE ADVICE

All carpets retain their appearance for a longer time if you remove dirt and stains regularly. If you have a light, single-colour carpet you will naturally need to clean it more often than a darker, patterned one. Almost all dirt comes from outside. If you want to prevent it from coming all the way in you can place a good-quality scraper mat outside the door and an entrance mat inside. Effective vacuuming is the easiest and most environmentally friendly cleaning method. It is also the most economical. When you vacuum regularly you remove all the loose dirt and dust.

OTHER INFORMATION

Important information when ordering wall-to-wall carpets and runners:

- Kasthall offers the possibility to add a sound absorbing felt backing to all flat weave constructions in our wall-to-wall range. The minimum quantity required is 400 sqm. The benefits from this backing is added sound absorption and increased comfort. This sandwich construction also reduces the installment time since it eliminates the drying time between the layers.
- We recommend that our carpets are installed by professional carpet-fitters. Some carpets should be laid on underfelt with gripper strips, while others can be glued direct to the floor. Contact us for more information and laying instructions.
- Depending on the materials used and the different processes in production, dimensions of the carpet may vary by up to 3%.
- Note that variations in colour and texture can arise between batches of yarn and dye baths.
- Please note that certain restrictions apply to stitching of concave shapes/lines. For rugs with concave shapes/lines, please submit drawing to Kasthall prior to placing the order.
- All runners should be laid on an underlay that prevents them from moving on all types of flooring. This extends the life of the carpet and reduces the risk of slipping.
- In longer corridors the runner should be laid on underfelt with gripper strips.

ENVIRONMENT *and* SOCIAL RESPONSIBILITY

At Kasthall environmental work is a very natural part of what we do and what we stand for – today and for generations to come. Naturally we are certified according to the environmental standard ISO14001, and many of our products bear the symbols of LEED, CRI Green Label Plus, BASTA, Öko-tex and GUT. These certificates confirm our continuous efforts. We produce our woven and hand tufted rugs in our own factory in Sweden – a rarity these days – where we adhere to the strict environmental regulations and employment laws of our country and the EU. Our working environment reflects the creativity and quality that we strive for – in design, materials and manufacture.

We choose our materials with the utmost care. Aside from appearance, it is important that the yarns we use have the characteristics we demand for various types of settings, such as wear resistance, fire resistance and environmental requirements. At our factory we bring together expertise and innovation. We love what we do, we do it well, and we never want to stop striving forward. And everything we do, we do with the greatest possible consideration for the environment around us. This is the way it has been ever since Kasthall was founded, in 1889 in Kinna, Sweden. Our commitment to quality will never go out of fashion. Read more about our environmental work and philosophy at www.kasthall.com.



Kasthall SHOWROOMS *and* HEAD QUARTER:

STOCKHOLM FLAGSHIP STORE
& SHOWROOM:

Ingmar Bergmans Gata 4
SE-11434 Stockholm
Phone: +46 (0)8 662 27 11
sthlmshop@kasthall.se

NEW YORK SHOWROOM:

The New York Design Center
200 Lexington Avenue, Suite 611
NY 10016
Phone: +1 212 421 0220
info@kasthallusa.com

MILAN SHOWROOM:

Piazza Paolo VI (Via Delia Tessa)
IT-20121 Milan
Phone: +39 02 80 500 338
info@kasthall.it

GOTHENBURG SHOWROOM:

Kaserntorget 8
SE-41118 Gothenburg
Phone: +46 (0)31 17 10 62
goteborg@kasthall.se

KASTHALL HQ SWEDEN:

Box 254, Fritslavägen 42
SE-51123 Kinna
Phone: +46 320 20 59 00
info@kasthall.se

FOR THE LATEST UPDATE *of our collection* OR TO FIND AN AGENT
NEAR YOU, PLEASE VISIT OUR WEBSITE. www.kasthall.com